

QS4P.5 ; QS4X.5

Electropompa submersibila de
4", Varianta P+X

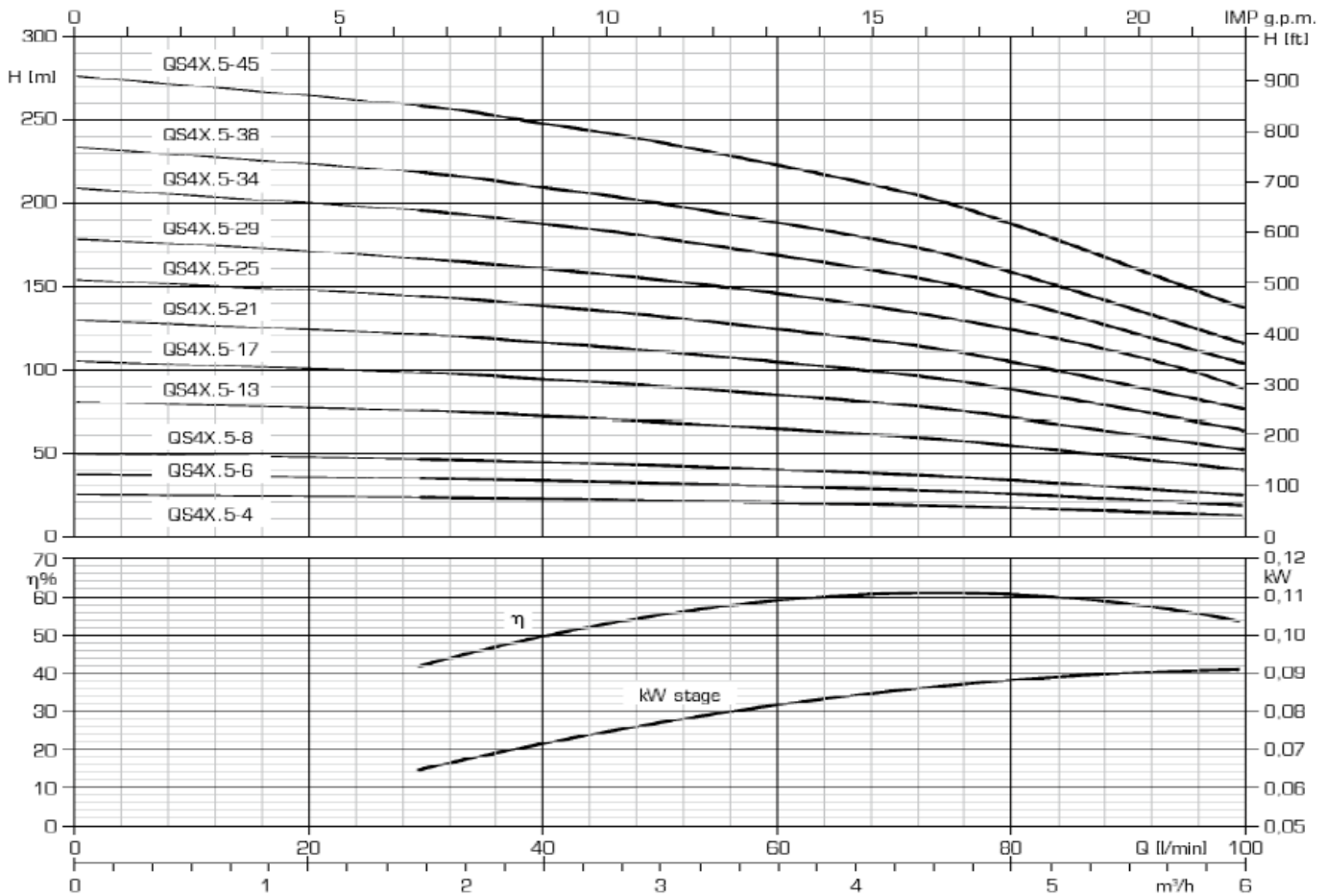
S.C.SYSNEC BLUE S.R.L.

www.sysnec.ro

neculaluciann@gmail.com

contact@sysnec.ro

TEL: 0741.569.259



Electropompă QS4P.5 Electropompă QS4X.5 cu 2 metri cablu	CARACTERISTICI HIDRAULICE (n=2850rpm)								Lungime (mm)	Greutate (kg)
	Debit (Q) – Diametru refulare: 1" ¼ G-F									
	mc/h	0	1,8	2,4	3	4,2	4,8	6		
l/min	0	30	40	50	70	80	100			
QS4P.5-4 / 0,37kW/220V QS4X.5-4 / 0,37kW/220V	Presiune (mca)	24	23	22	21	18	17	12	716	10,7
QS4P.5-6 / 0,55kW/220V QS4X.5-6 / 0,55kW/220V		37	34	33	31	28	25	18	796	11,8
QS4P.5-8 / 0,75kW/220V QS4X.5-8 / 0,75kW/220V		49	46	44	42	37	33	24	886	13,3
QS4P.5-13 / 1,1kW/220V QS4X.5-13 / 1,1kW/220V		80	74	71	68	60	54	39	1084	16
QS4X.5-17 / 1,5kW/220V QS4X.5-17 / 1,5kW/380V		104	97	93	89	78	71	51	1207	19,7
QS4X.5-21 / 2,2kW/220V QS4X.5-21 / 2,2kW/380V		129	120	115	110	97	87	64	1337	20,6
QS4X.5-25 / 2,2kW/220V QS4X.5-25 / 2,2kW/380V		153	143	137	131	115	104	76	1467	21,4
QS4X.5-29 / 3kW/380V		178	166	159	152	134	121	88	1629	23,2
QS4X.5-34 / 3kW/380V		208	195	187	178	157	142	103	1792	24,3
QS4X.5-38 / 4kW/380V		233	217	209	200	176	158	115	2004	28,1
QS4X.5-45 / 4kW/380V		276	258	247	236	208	187	136	2232	29,9